



# Bethany Lutheran Church and Early Childhood Center

July, 2025

## Bethany Lutheran Church

1000 W. 26<sup>th</sup> Street South  
Wichita, KS 67217

Church Phone 316-265-7415  
BECC Phone 316-265-3033  
[www.bethanylutheranwichita.org](http://www.bethanylutheranwichita.org)

## Worship Service

Sunday - 9:00 AM

ECC chapel -

Wed.- 9:15 AM

## Sunday School &

## Adult Bible Study

Sunday - 10:30 AM

Pastor:

Nicholas Cordt

## Early Childhood Center

Serving children ages

6-Weeks through

Five Years

Program Director

Danita Seamars

316-265-3033

## July 2025

S	M	T	W	T	F	S
		1	2	3	4	5
6	7	8	9	10	11	12
13	14	15	16	17	18	19
20	21	22	23	24	25	26
27	28	29	30	31		

I recently read a survey where the typical American family will spend \$100 on fireworks this Summer. Based on the explosive proclivities of my neighbors, I suspect that number is on the low side. But what I find ironic is that 99% of the fireworks America uses to celebrate freedom come from China, a country not know for being champions of independence. As Americans, we are easily able to overlook this glaring incongruity and celebrate our nation's independence from tyranny, taxation without representation, and religious oppression.

True freedom, however, wasn't won for us at Concord or Yorktown, but at Calvary. Our Lord and Savior, Jesus Christ, freed us from the power of sin, death, and the grave through His victory on the cross. But that freedom isn't something we celebrate one day a year. Because of Jesus, every day is our Independence Day. Our Epistle reading this past Sunday from Galatians 5 couldn't have been timed better.

*"For you were called to freedom, brothers. Only do not use your freedom as an opportunity for the flesh, but through love serve one another."* Galatians 5:13

Our Christian freedom is a gift, but it comes with responsibility. St Paul encourages us to use it, not to satisfy our own desires, but in love and service of others. So celebrate the blessing we have of living in the United States, but don't forget to embrace the true freedom we have through the death and resurrection of Jesus.

Yours in Christ,



**Women's Bible Study:** meets on the 1st & 3rd Thursdays of the month at 7:00 p.m. at Bethany in the Library. The study is **Donna Snow's "Unshakable"**. We will not meet in July due to too many have other activities. Next meeting will be August 7th. Ask Jenny Colby or Doris Cannon for more information.

**Men's Bible Study:** 1st & 3rd Thursdays, 9:00am at the church. Will meet in the Meet and Eat Room. Motivational/Inspirational Gathering. All welcome! For more information, contact Curtis Tucker (316-942-5060) .

**Seniors' Activities: Breakfast:** Meets on the 3<sup>rd</sup> Wednesday at 9:00am at Country Café, 2804 S. Seneca. **Walking and Talking Group:** Mondays, Wednesdays & Fridays: 1:00-2:00pm, in the Activity Center. Join us for exercise and fellowship.

**Pastoral Visits and Contact:** Pastor Nick Cordt is delighted to visit: to get acquainted, have devotion and prayer, and talk and pray over matters of concern in life. Please, feel free to contact the church office between 9:00am and 5:00pm, Monday through Friday, to arrange a day and time to do so. If Pastor is not available at the time you call, leave a message with the office secretary, Julie, or send an email [pastornick@bethanylutheranwichita.org](mailto:pastornick@bethanylutheranwichita.org)

Erich Schieber	7/7
Tonya Cordt	7/7
Steve Reiling	7/11
Alan Keimig	7/15
Judy Parmenter	7/17
Sylvia Herheim	7/25
Bev Mittlestadt	7/26
Aaron Miller	7/29



Bill Bolin	7/1
Carol Schieber	7/7
Jazmin Rowley	7/7
Melissa Miller	7/8
Paul Albright	7/9
Tonya Cordt	7/15
Jim Brummett	7/18
Vera Brummett	7/18



Anniversaries		Years
Dale & Sylvia Moore	7/3	4
Aaron & Melissa Moore	7/4	11
Erich & Carol Schieber	7/7	35
Glenn & Elaine Stark	7/18	44
Richard & Dorisann Vinroe	7/18	61
Larry & Mable Moore	7/18	27

## **Greeters**



### **July**

6: Steve Nienke  
13: Roger & Sherri Obermueller  
20: Robert & Barbara Ohmie  
27: Mike & Judy Parmenter

### **August**

3: Steve & Vicki Pasewark  
10: Linda Puls  
17: Steve Reiling  
24: Amy Salazar  
31: Joni Schrahl

*You are the first point of contact for our guests! Welcome them by smiling. If this is their first visit to our church, thank them for joining us in worship. Alert one of our ushers that they are first time visitors so that any questions regarding our service can be answered. If you cannot be greeter on the Sunday you are scheduled, please talk to Doris Cannon and she will contact someone else. If you would prefer not to be a greeter, please tell Doris.*

## **Children's Sunday School Teaching Schedule**

*Opening in the back of the Sanctuary / Lesson and Activity time  
following in the Youth room in the basement*



July 6 Tonya Cordt, Helper -Deb Welty	Aug.3 Tonya Cordt, Helper-Deb Welty
July 13 Deb Welty, Helper- Julie O'Brien	Aug 10 Deb Welty, Helper-Julie O'Brien
July 20 Julie O'brien, Helper-Jeanetta Bolin	Aug 17 Julie O'Brien, Helper-Jeanetta Bolin
July 27 Jeanetta Bolin, Helper-Tonya Cordt	Aug 24 Jeanetta Bolin, Helper-Tonya Cordt
	Aug 31 Julie O'Brien, Helper-Deb Welty

## **Altar Guild**



### **Fill**

July 6 & Aug 3	Margaret Baldrige & Marcia Hampton
July 13& Aug 10	Mable Moore
July 20 & Aug 17	Amy Salazar
July 27 & Aug 24	Lois Adams & Tammie Hatfield
Aug 31	Doris Cannon

### **Cleanup**

Julie O'Brien  
Toni Bolin  
Barb Ohmie & Linda Firshing  
Rhonda Dehncke & Vivian Mailly  
Laurie Carrell

Anyone who would like to help with Altar Guild, please contact Doris Cannon.



## **Head Usher – Alan Keimig**

### **July**

David Funke  
Larry Moore  
Curtis Tucker

### **August**

Braden Cordt  
Bruce Kester  
Roger Obermueller

*If you cannot be usher on the Sunday/month you have been assigned, please talk to Alan Keimig. If you would prefer not to be an usher, please tell Doris Cannon. Or if you would like to be an usher and you're not on the list, contact Doris.*



### **July**

6: Robert Bolin / Jim Merrick  
13: Richard Vinroe / Mark Welty  
20: Mike Parmenter / Robert Ohmie  
27: Robert Bolin / Jim Merrick

### **August**

3: Richard Vinroe / Mark Welty  
10: Mike Parmenter / Robert Ohmie  
17: Robert Bolin / Jim Merrick  
24: Richard Vinroe / Mark Welty  
31: Mike Parmenter / Robert Ohmie



There is a lot of **behind the scenes work** that is done for our worship services, Bible Studies, Children's and Youth Ministries, greeters, ushers, altar guild, music ministry, and so many more ministries that we need help with. Most of these do not take much time out of our busy schedules to be part of. **Is God calling you to be part of something but you don't know where to start?** Be an usher! Prepare the communion! These are very important jobs that only require a little bit of you. Please contact an elder listed in this newsletter to see where YOU can be of service to God's kingdom.

## Stewardship Report

Time, Talents  
and Treasure  
**May and  
Year-To-Date**



	Bethany Lutheran Church		Early Childhood Center	
	May	Year To Date	May	Year To Date
Revenues	\$34,795.56	\$137,090.35	\$29,859.21	\$161,924.58
Expenses	\$26,247.02	\$117,166.78	\$50,984.40	\$201,617.13
Balance	\$8,548.54	\$19,923.57	<b>-\$21,125.19</b>	<b>-\$39,692.55</b>
<b>NOTE #1:</b>	\$10,000 was drawn from the Line of Credit and is included in the ECC's Year To Date revenues.			
<b>NOTE #2:</b>	Monthly payments are currently being made to repay the \$30,000 borrowed through a Line of Credit.			
<b>NOTE #3:</b>	May was a three payroll month. This was a major factor in the ECC's large May deficit.			
<b>NOTE #4</b>	As of May 31 <sup>st</sup> there are \$31,414.64 in Designated Funds to repair the roof: \$7,380 in donations and \$24,133.44 from insurance. \$98.80 has been spent.			
<b>NOTE #5</b>	When there is a total church-wide shortfall of funds, monies are borrowed from the Designated Funds. The funds are repaid as they are needed or when the church has funds available. Currently there is \$33,641.55 in the Designated Fund Account, Another \$22,210.60 has been borrowed to cover the overall deficit. The total amount of designated funds is \$55,852.15.			

## Trustees Report

Our roofing contractors are progressing nicely ( between rain) and we should see a completion date soon. Storm winds have fallen the big tree to our north property. Unfortunately, it damaged the neighbor's house, cars, fence... etc. We are not liable for any damage. The tree was not dead nor we on notice. MGMT will discuss future actions, if needed.

Kitchen ice maker has been replaced with a private donation. Many thanks for that action!

Our in-house technician replaced some controls on the big kitchen refrigerator. Seems to have solved one of the issues. Time will tell.

Again, many thx to our volunteers at Bethany!

Our boiler is now out of commission. Steps are in place to legally decommission per state rules.

Have a safe and enjoyable 4th!! ...Trustees



**Sunday Mornings: Service: 9:00AM Fellowship Time: 10:00 to 10:30AM**

**Sunday School/Bible Study 10:30-11:30AM**

**LIBRARY: Robert Bolin** leads a study "The Mission Journeys of the Apostle Paul and his Epistles" covering the books of Acts through 2 Timothy.

**MEET & EAT ROOM- Mark Dehncke** leads a study. Currently studying other religions and how they differ from the Lutheran Church beliefs.

**ACTIVITY CENTER- Pastor Nick** leads a class. Currently continuing a study on the Book of Genesis.

**YOUTH AND KIDS - SUNDAY SCHOOL includes ages Preschool to age 18.** Teachers are Deb Welty, Julie O'Brien, Jeannetta Bolin and Tonya Cordt. An opening is held at 10:30 in the back of the Sanctuary with music led by Sandy Tope. After the music, Lesson and Activity is in the Youth Room in the basement.





## Early Childhood Center

Bethany's Daycare operation is perking along into the summer now.

Good news: We have been APPROVED for the food reimbursement from the State! Soon, we will be getting money from the State of Kansas to pay for all our food costs and associated labor costs. That should bring in a couple of thousand dollars a month to pay us back for those costs. Meanwhile...

Our enrollment continues to bounce around

at just under 50 kids. We need to have just over 50 children enrolled to make our budget work. We have discovered that --as prices everywhere keep going up-- we are once again charging less than the going market rate for our services, so we are looking at raising tuition. Doing this would solve our financial shortfalls we have been experiencing, and we would still be in line with other daycare centers so far as cost --while remaining above the other centers in quality.

SO, keep praying for us, and we THANK YOU for your support!!

For Bethany's Early Childhood Ministry, *Jim Merrick*

Guess what our chapel lesson was about this morning? A story about a lot of rain seemed fitting.

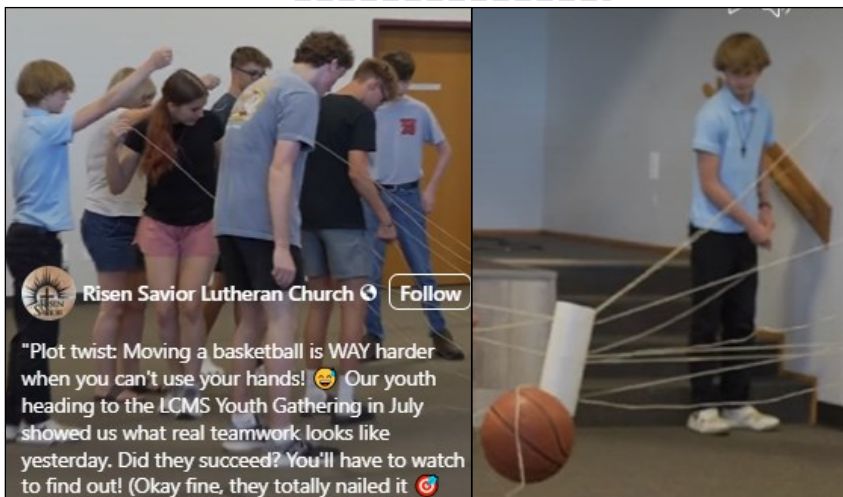


**Youth Gathering:** Jackson Carrell, Aubrey Cordt and Jeanetta Bolin (adult leader) will be headed to the LCMS Youth Gathering on Friday, July 18 and return on Thursday, July 24. Risen Savior has graciously let us join their group. There will be 17 of us traveling together (12 youth and 5 adults).

Through the generosity of our congregation, Jackson and Aubrey were able to raise funds needed from the freewill offerings for meals we served prior to 2 of the Advent and 2 of the Lenten Services. We also want to thank LWML for baking and donating the proceeds from peppernuts and half of the proceeds from the bake sale in December.

Youth Gatherings proclaim the Lordship of Jesus Christ and God's saving grace to His people through Christ. In this setting, young people grow in their personal relationship with God and grow in their fellowship of Word and Sacrament in Christ's Church. Youth Gatherings are a vehicle by which the Church reaches out to, cares for, and affirms young people, both church and unchurched. Youth Gatherings equip youth and adults for ministry and vocational service in a variety of settings in their congregations, communities, and world. Youth Gatherings affirm, equip, and support adults who work with young people.

Prayers for a safe trip.





## Bethany's Garden Where Flowers and People Bloom!!

The 20th of June was the official first day of summer. Harvesting potatoes, cabbage and onions.



Refer to the photo with the three sunflowers. I'm wanting to use it for coffee mugs, t-shirts and bags. The sunflowers are from our garden. Keep checking Facebook. Please, let me know if you are interested.



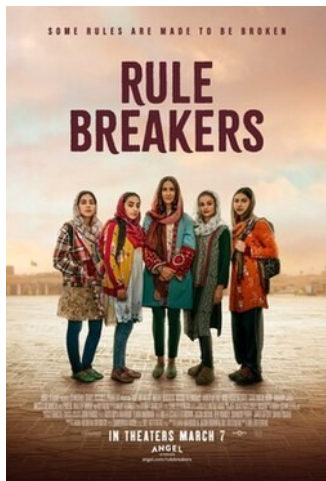
Wind damage report: Sugar Snap Peas twisted vines, total loss. Tomato plants

took the hardest hit. Their crowns were broken off. That means the plants won't grow taller cutting production by 50%. So I bought more tomato plants to compensate for the loss. All of them had to be staked. Most of the seven foot sunflower plants were completely broken at the base. All of them were volunteers from last year's seed. That means they came up on their own. The green beans seeds were washed away.



I will plant more seeds. Gardeners sometimes have to be a plant doctor setting broken bones and treating for disease. Plants are resilient. When you believe the plants will never recover they surprise you!

Vicky Collins, 316-771-1207.



## Movie Night

**Saturday, July 19th, 6:30pm**

Based on the real journey of Afghanistan's trailblazing all-girls robotics team.

In a nation where educating girls is seen as rebellion, a visionary woman dares to teach young minds to dream.

## Fly Fishing Club

Fly Fishing club are planning on going to Cowley lake on Wednesday June 25. Hopefully there will be pictures of fish caught. If you have any questions please talk with Doug Meyer, Robert Bolin or Dwan Welty.



# Lutheran Women in Mission

THANK YOU to everyone who helped to support the baby bottle ministry for Embrace of Wichita this year. I'm sure whatever our bottle donations have generated will help to support new mothers with their precious babies.

HAVE YOU NOTICED the round tables in the activity center? These tables have been provided by LWML for use by the congregation as an alternative to the rectangular tables for Sunday morning fellowship and Bible Class, as well as for potlucks and any other special events.

TUESDAY, July 14, is the next regularly scheduled LWML meeting beginning at 4pm. Ruth will give an overview of her experience at the National LWML Convention in Omaha. We would love to have as many ladies of the congregation attend our meeting as we also share plans for hosting the fall event to be held at Bethany in October.

WE CONTINUE TO COLLECT EYEGLASSES, sunglasses and soft glass cases in the wooden chest across from the church office. All the glasses and cases collected will be sent along with members of Holy Cross Lutheran on a mission trip to Guatemala in December.

BE SURE TO STOP BY THE LWML TABLE in the narthex and pick up any of the free information to familiarize yourself with LWML. There are also MITE boxes available on the table for your use as well. If you have any questions about LWML, don't hesitate to ask any of our wonderful LWML ladies.

ARE YOU INTERESTED IN QUILTING? Our quilting ladies meet on Tuesday mornings at 10 am and again on Saturday mornings at 9 am in the room at the end of the back hallway. They get together to assemble quilts for Lutheran World Relief. They would love to have you join them. Check out the quilts being displayed in the sanctuary. See Amy or Jenny if you want to buy one. There have been 111 quilts done since last October.

**IT'S TIME AGAIN TO SHOP FOR SCHOOL SUPPLIES FOR LUTHERAN WORLD RELIEF SCHOOL KITS.** Here's what we need:

-Pens (blue or black, no gel pens)



-Erasers (the pink ones)



-Scissors (preferably with rounded tips)



-Pencil sharpeners



-Spiral Notebooks (70 count)



Place them in the container in the Narthex.



## Second Saturday Cleaning

July 12th, 9:00am

Will continue cleaning kitchen cabinets and maybe outdoor needs



## Will Be Missed

Eric and Carol Schieber and Ludwig and Rayden and Jazmin will be missed. They are moving to Florida. We pray for them to find a church in their new home where they can continue growing in faith. Address available in the church office.



## Food Donations

## Westside UMC Food Pantry

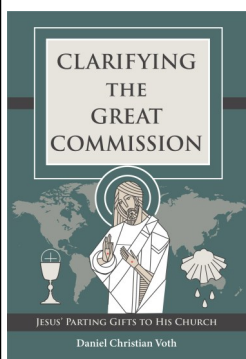
1313 W Lydia St. We are still collecting non-perishable food items for Westside United Methodist's food pantry. If you would like to donate, place items in the chest on the table in the "Donation Hall" or in the large tub just under the table. Food is handed out at Westside Church on Wednesdays, 9:30-11:00am.



**Southwest Neighborhood Association** meets the fourth Tuesday of the month, 7pm at Bethany except November and December. We look forward to seeing you and bring a neighbor or two. There is plenty of room. *Contact Darlene Nuse for more information.*

## Lutheran Hour Ministries

is a Christian outreach ministry supporting churches worldwide in its mission of *Bringing Christ to the Nations - and the Nations to the Church*. Lutheran Hour Ministries produces Christian radio and TV programming for broadcast as well as Internet and print communications, dramas, music, and outreach materials, to reach the unchurched in more than 30 countries. LHM's flagship program, **The Lutheran Hour**, is the world's longest-running Christian outreach radio program. It airs weekly on nearly 1,800 stations. **Tune in locally Sunday mornings at 9:00 AM (88.7FM)**. For more information, visit [www.lhm.org](http://www.lhm.org) or call 1-800-876-9880.



### Book of the Month: **Clarifying The Great commission**

Jesus' parting words to His disciples known as "The Great Commission" have been a prominent hallmark of American Christianity. But when these words, "Go therefore and make disciples..." are misunderstood or not put in proper context they can turn into something they're not. In *Clarifying the Great Commission*, Rev. Daniel Christian Voth identifies common omissions from our collective understanding of Jesus' farewell discourse - omissions that turn Christ's promises of forgiveness, life, and salvation into a legalistic command. Come and discover a richer understanding of The Great Commission (Jesus' Parting Gifts to His Church) either individually or in a group setting. Discussion questions follow each chapter.



## Issues, Etc.



Address: 3815 E. 17th St. N., Wichita, KS 67208, Phone: 316-684-5224  
[www.fairmountministries.org](http://www.fairmountministries.org) [info@fairmountministries.org](mailto:info@fairmountministries.org)

### Groups, Bible Studies, and Events

Fairmount is a place for anyone and everyone. We walk with our community, encouraging them as Christ encourages us (Psalm 90:17), build one another up (Romans 15:5), and carry each other's burdens (Galatians 6:2). It is our role as the Holy Spirit has empowered all Christians as members of the royal priesthood: "But you are a chosen people, a royal priesthood, a holy nation, God's special possession, that you may declare the praises of Him who called you out of darkness into His wonderful light". (1 Peter 2:9). We would love to meet you! There are a couple of ways to connect with us. You can call us or drop us an email: 316-684-5224 [info@fairmountministries.org](mailto:info@fairmountministries.org)

The "College Age Bible Study" meets each Tuesday combined with the "Young Adults Group" at 6:47pm. Faith On Tap meets on the 3rd Sunday of the month from 6:00-8:00pm at Old School Tap House 210 E. Kechi Road, Kechi, KS.

We have a Women's Bible Study, which meets each Wednesday from 6:00pm to 7:30pm, then on the first Friday each month there is live music as well as Open Mic nights.

It is now time for our Fireworks Tent! Go the website to learn more: [www.fairmountministries.org](http://www.fairmountministries.org)

Looking ahead, Oct. 16th will be our 7th annual event "The Gathering". This year it is being held at Botanical Gardens. Ticket sales will begin in August.



Sun	Mon	Tue	Wed	Thu	Fri	Sat
<div>29</div> <div>9am - Sun. Worship w/</div> <div>10am - Fellowship Time @</div> <div>10:30am - SS &amp; Bible Class @</div>	<div>30</div> <div>1pm - GPWAT (God's People</div>	<div>1</div> <div>10am - LWMML - Quilting @</div>	<div>2</div> <div>10am - ECC Chapel .</div> <div>1pm - GPWAT (God's People</div>	<div>3</div> <div>9am - Men's Fellowship</div> <div>1pm - GPWAT (God's People</div>	<div>4</div> <div>9am - LWMML Quilting</div>	<div>5</div>
<div>6</div> <div>9am - Sun. Worship w/</div> <div>10am - Fellowship Time @</div> <div>10:30am - SS &amp; Bible Class @</div>	<div>7</div> <div>10am - LWMML - Quilting @</div> <div>4pm - LWMML - Meeting</div>	<div>8</div> <div>10am - ECC Chapel .</div> <div>1pm - GPWAT (God's People</div>	<div>9</div>	<div>10</div> <div>1pm - GPWAT (God's People</div>	<div>11</div> <div>9am - 2nd Saturday Work Day</div> <div>9am - LWMML Quilting</div>	<div>12</div>
<div>13</div> <div>9am - Sun. Worship w/</div> <div>10am - Fellowship Time @</div> <div>10:30am - SS &amp; Bible Class @</div>	<div>14</div> <div>1pm - GPWAT (God's People</div> <div>10am - LWMML - Quilting @</div>	<div>15</div> <div>9am - Senior Breakfast</div> <div>10am - ECC Chapel .</div> <div>1pm - GPWAT (God's People</div>	<div>16</div> <div>9am - Men's Fellowship</div> <div>1pm - GPWAT (God's People</div>	<div>17</div>	<div>18</div> <div>9am - LWMML Quilting</div> <div>6:30pm - Movie Nite</div>	<div>19</div>
<div>20</div> <div>9am - Sun. Worship w/</div> <div>10am - Fellowship Time @</div> <div>10:30am - SS &amp; Bible Class @</div>	<div>21</div> <div>1pm - GPWAT (God's People</div> <div>10am - LWMML - Quilting @</div> <div>7pm - SWMNA Meeting</div>	<div>22</div> <div>1pm - GPWAT (God's People</div>	<div>23</div>	<div>24</div> <div>1pm - GPWAT (God's People</div>	<div>25</div> <div>9am - LWMML Quilting</div>	<div>26</div>
<div>27</div> <div>9am - Sun. Worship w/</div> <div>10am - Fellowship Time @</div> <div>10:30am - SS &amp; Bible Class @</div>	<div>28</div> <div>1pm - GPWAT (God's People</div> <div>6:30pm - MGMT Team</div>	<div>29</div> <div>10am - LWMML - Quilting @</div>	<div>30</div> <div>10am - ECC Chapel .</div> <div>1pm - GPWAT (God's People</div>	<div>31</div>	<div>1</div>	<div>2</div>



Movie Night:  
July 19th, See  
page 6 for Info

## **Sunday Mornings**

Service at 9:00 AM  
(also online: Facebook Live, YouTube)

Fellowship time:  
10:00AM to 10:30AM  
Sunday School/Bible Study  
10:30AM to 11:30AM

## **Church Office Hours**

Open: 8:30am  
Closed for Lunch: 12:00 - 1:00p.m.  
Closed: 5:00 p.m.



Bethany Lutheran Church and School  
1000 W 26<sup>th</sup> St. South  
Wichita, KS 67217



Like us on Facebook!  
Bethany Lutheran  
Church & Early  
Childhood Center

