



Bethany Lutheran Church and Early Childhood Center

February, 2026

Bethany Lutheran Church

1000 W. 26th Street South
Wichita, KS 67217

Church Phone 316-265-7415
BECC Phone 316-265-3033
www.bethanylutheranwichita.org

Worship Service

Sunday - 9:00 AM
ECC chapel -

Wed.- 9:15 AM

Sunday School & Adult Bible Study

Sunday - 10:30 AM

Pastor:

Nicholas Cordt

Early Childhood Center

Serving children ages
6-Weeks through

Five Years

Program Director

Danita Seamars

316-265-3033

February 2026

S	M	T	W	T	F	S
1	2	3	4	5	6	7
8	9	10	11	12	13	14
15	16	17	18	19	20	21
22	23	24	25	26	27	28

I've lived in Kansas for over 30 years so when it was 3rd when I started writing this article and 54th a few days later when I finished, shouldn't come as any surprise. What did come as a surprise was the date of Ash Wednesday this year. Lent begins in two weeks on February 18th. (Note: Next year Ash Wednesday falls on even earlier on February 10th).

During our Lenten journey this year, our theme will be: "Savior, Servant, Friend". Our focus for each week is as follows:

Ash Wednesday • Forgiver: Jesus forgives us again and again, even though we do not deserve it.

Week 2 • Healer: Jesus heals us when we are wounded and weakened by sin.

Week 3 • Listener: Jesus listens to us like no other and answers our questions and concerns.

Week 4 • Encourager: Jesus encourages us in our faith to live our lives for Him.

Week 5 • Protector: Jesus protects us from the devil and from danger and keeps us safe in Him.

Week 6 • Comforter: Jesus comforts us in struggles and sorrows so that we might find rest in His promises.

All of our evening services begin at 7:00 PM. On Ash Wednesday, we'll celebrate Holy Communion and the imposition of ashes. There won't be a meal before that service but the other five Wednesday evenings of Lent there will be a meal in the Activity Center from 5:45 – 6:45 PM.



Women's Bible Study: meets on the 1st & 3rd Thursdays of the month at 7:00 pm in the Library. The study is **Donna Snow's "Unshakable"**. Currently studying Mary Magdalene. Ask Jenny Colby or Doris Cannon for more information.

Men's Bible Study: 1st & 3rd Thursdays, 9:00am at the church. In the Library. For more information, contact Curtis Tucker (316-942-5060) .

Seniors' Activities: Breakfast: Meets on the 3rd Wednesday at 9:00am at Country Café, 2804 S. Seneca. **Walking and Talking Group:** Mondays, Wednesdays & Fridays: 1:00-2:00pm, in the Activity Center. Join us for exercise and fellowship. **Playing Games** meets on Wednesdays 1:30-3:30. Come and enjoy games and fellowship.

Pastoral Visits and Contact: **Pastor Nick Cordt** is delighted to visit: to get acquainted, have devotion and prayer, and talk and pray over matters of concern in life. Please, feel free to contact the church office between 9:00am and 5:00pm, Monday through Friday, to arrange a day and time to do so. If Pastor is not available at the time you call, leave a message with the office secretary, Julie, or send an email pastornick@bethanylutheranwichita.org

Sunday Mornings: Service: 9:00AM Fellowship Time: 10:00 to 10:30AM

Sunday School/Bible Study 10:30-11:30AM

LIBRARY: Robert Bolin leads a study "The Mission Journeys of the Apostle Paul and his Epistles" covering the books of Acts through 2 Timothy.

MEET & EAT ROOM- Mark Dehncke leads a study. Currently studying the Bible starting with Genesis.

ACTIVITY CENTER- Pastor Nick leads a class. Currently continuing a study of Isaiah.

YOUTH AND KIDS - SUNDAY SCHOOL includes ages Preschool to age 18. Teachers are Deb Welty, Julie O'Brien, Jeannetta Bolin and Tonya Cordt. An opening is held at 10:30 in the back of the Sanctuary with music. After the music, Lesson and Activity is in the Youth Room in the basement or first classroom.



Birthdays	
Robert Schreffler	2/8
Hailey Bowman	2/10
Darlene Nuse	2/13
Braden Cordt	2/14
Art Kuehn	2/17
Bruce Kester	2/20
Susan Lang	2/24
Junior Storck	2/24
Jodi Fritz	2/27



Baptisms	
Doug Meyer	2/1
Robert Bolin	2/9
Netta Albright	2/16
Dian Merrick	2/23
Barbara Ohmie	2/25

Anniversaries	Date	Years
Michelle and Curtis Tucker	2/18	60
Rhonda and Mark Dehncke	2/26	32

Greeters



February

1: Jim & Vera Brummett
8: Doris Cannon
15: Laurie Carrell & Jackson
22: Jenny Colby

March

1: Vicky Collins
8: Diane Crossman
15: Mark & Rhonda Dehncke
22: Linda Firsching
29: Esther Fisher

You are the first point of contact for our guests! Welcome them by smiling. If this is their first visit to our church, thank them for joining us in worship. Alert one of our ushers that they are first time visitors so that any questions regarding our service can be answered. If you cannot be greeter on the Sunday you are scheduled, please talk to Doris Cannon and she will contact someone else. If you would prefer not to be a greeter, please tell Doris.

Children's Sunday School Teaching Schedule

Opening in the back of the Sanctuary / Lesson and Activity time following in the Youth room in the basement



Feb 1	Deb Welty, Helper-Julie O'Brien	Mar 1	Deb Welty, Helper - Julie O'Brien
Feb 8	Julie O'Brien, Helper-Jeanetta Bolin	Mar 8	Julie O'Brien, Helper-Jeanetta Bolin
Feb 15	Jeanetta Bolin, Helper-Tonya Cordt	Mar 15	Jeanetta Bolin, Helper-Toya Cordt
Feb 22	Tonya Cordt, Helper-Deb Welty	Mar 22	Tonya Cordt, Helper-Deb Welty
		Mar 29	Deb Welty, Helper-Julie O'Brien

Altar Guild



Fill

Jan 4 & Feb 1 Margaret Baldrige & Marcia Hampton
Jan 11 & Feb 8 Mable Moore
Jan 18 & Feb 15 Amy Salazar
Jan 25 & Feb 22 Lois Adams & Tammie Hatfield

Cleanup

Julie O'Brien
Toni Bolin
Barb Ohmie & Linda Firsching
Rhonda Dehncke & Vivian Mailly

Anyone who would like to help with Altar Guild, please contact Doris Cannon.



Head Usher – Alan Keimig

February

Bruce Kester
Doug Meyer
Larry Moore

March

David Funke
Roger Obermueller
Curtis Tucker

If you cannot be usher on the Sunday/month you have been assigned, please talk to Alan Keimig. If you would prefer not to be an usher, please tell Doris Cannon. Or if you would like to be an usher and you're not on the list, contact Doris.



February

1: Robert Bolin / Jim Merrick
8: Richard Vinroe / Mark Welty
15: Mike Parmenter / Robert Ohmie
22: Robert Bolin / Jim Merrick

March

1: Richard Vinroe / Mark Welty
8: Mike Parmenter / Robert Ohmie
15: Robert Bolin / Jim Merrick
22: Richard Vinroe / Mark Welty
29: Mike Parmenter / Robert Ohmie



There is a lot of **behind the scenes work** that is done for our worship services, Bible Studies, Children's and Youth Ministries, greeters, ushers, altar guild, music ministry, and so many more ministries that we need help with. Most of these do not take much time out of our busy schedules to be part of. **Is God calling you to be part of something but you don't know where to start?** Be an usher! Prepare the communion! These are very important jobs that only require a little bit of you. Please contact an elder listed in this newsletter to see where YOU can be of service to God's kingdom.

Stewardship Report End of Year Financial Report



This is the End Of Year (EOY) financial report for the church. It will be in a different form than the usual monthly report.			
	Cash Balance 1-1-25	\$29,107.94	
	REVENUES		
	General Fund	\$302,314.02	
	ECC Revenues	\$401,914.14	
	Line of Credit	\$10,000.00	
	Reimbursement Grant	\$14,414.97	
	Sub-total	\$728,643.13	
	EXPENSES		
	General Fund	\$263,422.56	
	ECC Revenues	\$479,099.64	
	Sub-total	\$742,522.20	
	BALANCE	-\$13,879.07	
	Cash Balance 1-1-26	\$15,228.87	
The general fund's revenues exceeded the budget by \$8,314.02, and had an end of year balance of balance of \$38,891.46. The general fund was blessed with three gifts totaling \$25,000.			
The ECC's expenses exceeded revenues by \$52,770.53. These losses were covered by the general funds balance of \$38,891.46 and a reduction of the cash balance by \$13,879.07. The ECC was awarded a Reimbursement Grant that covered \$14,414.97 of the ECC's 2025 costs and is budgeted to cover \$36,000 in 2026 expenses. The ECC also raised tuition in August.			
By the end of December, \$30,000 had been drawn from the Line of Credit (\$20,000 in 2024 and \$10,000 in 2025). The balance owed is \$24,858.35. The loan is budgeted to be repaid using ECC revenues. A new roof was installed this year. Insurance funds paid the majority of the cost. The remainder is being paid out of designated funds and the general fund. A payment plan was negotiated with the roofing company. Designated funds were used to make payments, and the 12-31-25 balance due was \$6,780. Another \$1,500 payment was made the first half of January. That payment used the last of the designated funds and then some general funds, leaving a debt of \$5,280. There are sufficient funds allocated in the 2026 General Funds budget to cover this cost.			
In 2024, the church borrowed from Designated Funds. The current amount due to reimburse those funds is \$65,571.63. The reimbursement is either by cash transfer when funds are available, or paying a cost from the general funds and in turn reducing the amount owed to that particular designated fund.			

Management Team Update

Election of officers and Team leaders and members will be coming up soon. Watch for more information in NewsNotes, emails or Announcements at church.

Staff were given Dillons Gift Cards from the money collected before Christmas for staff gifts.

A congregation update meeting will be scheduled soon. Thanks to all who have helped to keep building updates happening. It is greatly appreciated.

Trustees Report

We are battling the cold temps to get proper climate for the ECC rooms! The warmer temps (32 degrees 🙄) help.

We think we have identified some air infiltration and have insulated those areas. We are still attacking areas that the boiler served heat. A work in progress to keep costs down. We are using the Facility Improvement fund for expenses. Donations could be directed to that fund.

FYI, to replace the boiler was not a feasible answer. Boiler could have been replaced but piping to the rooms would not be cost effective! So, we provide the best units for our dollars and keep working towards the goal! Pray for temps in the 30-40's!!

Please be careful when snow/ice are around. We will do our best to keep snow removed and ice melt applied. Thanks to the volunteers!



Early Childhood Center

Our current enrollment stands at 42 kids, with 3 more infants signed up to come to us in the months ahead. Once those babies arrive, that will leave 2 openings in the Infant room.

We had a normal KDHE (Kansas Department of Health and Environment) inspection on the 26th of January, a COLD day when we were having trouble getting the west-wing rooms warm enough with the new mini-split heat pumps. (You will recall that our building's boiler is fully out of service now.) KDHE did not

like the chilliness of those two rooms so they will be re-checking us to see if we have fixed the issue. Trustees have found that the louvers on the mini-splits were set wrong, and they found some areas of direct outdoor air infiltration into the building, which they are fixing. We will see how that helps the heat issue on the very cold days. Otherwise, we were okay on the inspection.

Please pray for increased enrollment for us. We are holding our own, but if we could get just a few more families to come to us, things would be pretty peachy for our Center. As always, THANK YOU for your support!

For Bethany's Early Childhood Ministry,
Jim Merrick



Thank you to Pastor Nick for making sure we heard the Sunday message. It is greatly appreciated. It's available on YouTube or the Bethany website anytime.

STAY HOME TOMORROW, all my Bethany Lutheran Church & Early Childhood Center people!!

Between the predicted additional snow to come tonight and the extreme cold, we will just have an online service for you tomorrow. Our building will be closed.



Lutheran Hour Ministries

is a Christian outreach ministry supporting churches worldwide in its mission of *Bringing Christ to the Nations - and the Nations to the Church*. Lutheran Hour Ministries produces Christian radio and TV programming for broadcast as well as Internet and print communications, dramas, music, and outreach materials, to reach the unchurched in more than 30 countries. LHM's flagship program, **The Lutheran Hour**, is the world's longest-running Christian outreach radio program. It airs weekly on nearly 1,800 stations. **Tune in locally Sunday mornings at 9:00 AM (88.7FM)**. For more information, visit www.lhm.org or call 1-800-876-9880.

Fly Fishing Club

Bethany fly club met on January 17th to discuss a fly-fishing trip.

On April 6-8 we are going to Roaring River State Park located near Cassville, Missouri.

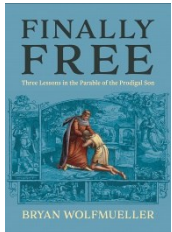
In February we are going to Kannapolis Seep Stream on the 4th but if the weather does not cooperate, we will try the 11th.

If anyone wants more information or is interested in joining the group talk with any club member.

Second Saturday Cleaning: None for February



Southwest Neighborhood Association meets the fourth Tuesday of the month, 7pm at Bethany except November and December. We look forward to seeing you and bring a neighbor or two. There is plenty of room. *Contact Darlene Nuse for more information.*



Book of the Month: Finally Free: Three Lessons in the Parable of the Prodigal Son by [Bryan Wolfmueller](#)

Bryan Wolfmueller digs into the popular parable of the Prodigal Son to bring hope and aid to our hurting conscience. For more information about Issues, Etc. go to: <https://issuesetc.org>



Food Donations

Westside UMC Food Pantry

1313 W Lydia St. We are still collecting non-perishable food items for Westside United Methodist's food pantry. If you would like to donate, place items in the chest on the table in the "Donation Hall" or in the large tub just under the table.

Food is handed out at Westside Church on Wednesdays, 9:30-11:00am.



Address: 3815 E. 17th St. N., Wichita, KS 67208, Phone: 316-684-5224
www.fairmountministries.org info@fairmountministries.org

Groups, Bible Studies, and Events Fairmount is a place for anyone and everyone. We walk with our community, encouraging them as Christ encourages us (Psalm 90:17), build one another up (Romans 15:5), and carry each other's burdens (Galatians 6:2). It is our role as the Holy Spirit has empowered all Christians as members of the royal priesthood: "But you are a chosen people, a royal priesthood, a holy nation, God's special possession, that you may declare the praises of Him who called you out of darkness into His wonderful light". (1 Peter 2:9). We would love to meet you! There are a couple of ways to connect with us. You can call us or drop us an email: 316-684-5224 info@fairmountministries.org

Established in 1959, Fairmount Ministries, originally known as University Lutheran Center, has seen a lot of changes and has operated under a handful of names. With all the changes, one thing remains constant...our call as an organization to share the love of Jesus Christ!

Lutheran Women in Mission

LWML's next monthly meeting will be on Tuesday, February 10th, 4:00 pm in the Library. Our meeting are open to all ladies of the congregation and we welcome each of you to join us for a short business meeting followed by a Bible Study from the current LMML Quarterly available on the table in the Narthex. If you don't have a copy, feel free to pick one up as you go by, it's also free to all ladies and has many articles as well as three Bible Studies inside. Hope to have you join us!

YOUNG WOMEN'S BIBLE STUDY: All young women (college age to 40ish, but all are welcome) are invited to attend a new Wichita-area Bible Study group affiliated with LWML. They are studying one of the books "Chosen: A study of Esther" by Donna Snow, and meet once a month. The next meeting will be on February 15th, at The Coop Coffee Co and Market, 2812 E. Douglas Ave. For more information, contact Mary Jensen from Trinity, Wichita, at (620) 931-7653, mjensenlwml@gmail.com.

OUR WEDNESDAY AFTERNOON games meet at 1:30 pm in the Meet and Eat room. There is no age limit and all are welcome to come and join us for a couple of hours of fun and fellowship. If you have a favorite game you like to play, bring it with you as we are always up to learning a new game. Snacks are always available also.

EYEGLASSES, AND READING GLASSES are collected in the chest across from the church office. If you have any glasses you no longer need, just drop them off in the chest and we will take care of them. Thank you for your contributions to this much needed mission.



ARE YOU INTERESTED IN QUILTING? The quilting ladies meet on Tuesday mornings at 10:00 am in the room at the end of the back hallway and again on Saturdays from 9:00 am until noon. Quilting experience is not needed!

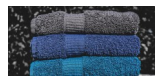
Since October, 50 quilts have been made!!

Besides quilts there are other items that are made for Lutheran World Relief. They are listed here with the items that we need donated to make these items. Thank you for your generous support in the past and in the future. You can put items in the container across from the office.

Baby Care kits: cloth diapers, sleepers with no feet, T- shirts (no onesies), receiving blankets, sweaters, hats, socks, gentle bar soap. All small clothing.



Health Kits: dark bath towel.



Sewing Kits: 3yards of cotton/cotton blend fabric, spools of thread.



School Kits: blue or black pens (no gel ink), 70ct spiral notebooks, blunt school scissors, rulers with inches & centimeters, pink eraser, pencil sharpeners.





Ash Wednesday: February 18th

Service at 7:00pm

Communion and imposition of ashes to forehead

“Remember: you are dust, and to dust you shall return.”

Lenten Services

February 25th, March 4th, 11th, 18th, & 25th

7:00pm



Suppers Will Be Served for Each of the | 5 Lenten Wednesdays

Feb. 25th, March 4th, 11th, 18th & 25th.

Will Begin Serving the Meal at 5:45pm and Ending at 6:30pm
Leaving Time for Kitchen to be Cleaned Before Service Begins



Feb. 25th meal will be Chili and Cornbread Prepared by the Men

March Meals will be Determined and Announced Later. Look for
Information in NewsNotes and Emails and Church Announcements



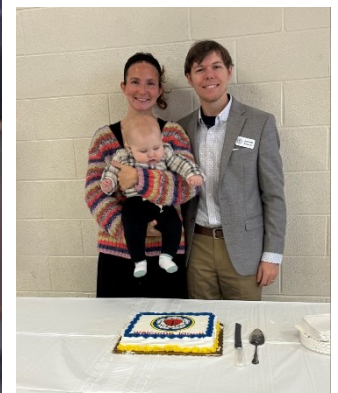
Movie Night: February 21st

Look for more information in Sunday NewsNotes and email

Triple Celebration.

Baptism, Confirmation
and becoming a
Member of Bethany.

Welcome to
Jarrett Bowman.



February 2026

Bethany Lutheran Church

Feb 2026 (Central Time - Chicago)

Sun	Mon	Tue	Wed	Thu	Fri	Sat
<div>1</div> <div>9am - Sun. Worship w/</div> <div>10am - Fellowship Time</div> <div>10:30am - SS & Bible</div>	<div>2</div> <div>1pm - GPWaT (God's</div> <div>7pm - Boy Scouts</div>	<div>3</div> <div>10am - LWML - Quilting @</div> <div>6:30pm - Spinning Boots</div>	<div>4</div> <div>9:30am - ECC Chapel .</div> <div>1pm - GPWaT (God's</div> <div>1:30pm - Games</div>	<div>5</div> <div>9am - Men's Fellowship</div> <div>7pm - Women's Bible</div>	<div>6</div> <div>1pm - GPWaT (God's</div>	<div>7</div> <div>9am - LWML Quilting</div> <div>4:30pm - Abbie A.C &</div>
<div>8</div> <div>9am - Sun. Worship w/</div> <div>10am - Fellowship Time</div> <div>10:30am - SS & Bible</div>	<div>9</div> <div>1pm - GPWaT (God's</div> <div>7pm - Boy Scouts</div>	<div>10</div> <div>10am - LWML - Quilting @</div> <div>4pm - LWML - Meeting</div> <div>6:30pm - Spinning Boots</div>	<div>11</div> <div>9:30am - ECC Chapel .</div> <div>1pm - GPWaT (God's</div> <div>1:30pm - Games</div>	<div>12</div>	<div>13</div> <div>1pm - GPWaT (God's</div>	<div>14</div> <div>9am - LWML Quilting</div>
<div>15</div> <div>9am - Sun. Worship w/</div> <div>10am - Fellowship Time</div> <div>10:30am - SS & Bible</div>	<div>16</div> <div>1pm - GPWaT (God's</div> <div>7pm - Boy Scouts</div>	<div>17</div> <div>10am - LWML - Quilting @</div> <div>6:30pm - Spinning Boots</div>	<div>18</div> <div>9am - Senior Breakfast</div> <div>9:30am - ECC Chapel .</div> <div>1pm - GPWaT (God's</div> <div>1:30pm - Games</div> <div>7pm - Ash Wednesday</div>	<div>19</div> <div>9am - Men's Fellowship</div> <div>7pm - Women's Bible</div>	<div>20</div> <div>1pm - GPWaT (God's</div>	<div>21</div> <div>9am - LWML Quilting</div>
<div>22</div> <div>9am - Sun. Worship w/</div> <div>10am - Fellowship Time</div> <div>10:30am - SS & Bible</div>	<div>23</div> <div>1pm - GPWaT (God's</div> <div>6:30pm - MGMT Team</div> <div>7pm - Boy Scouts</div>	<div>24</div> <div>10am - LWML - Quilting @</div> <div>6:30pm - Spinning Boots</div> <div>7pm - SWNA Meeting</div>	<div>25</div> <div>9:30am - ECC Chapel .</div> <div>1pm - GPWaT (God's</div> <div>1:30pm - Games</div> <div>5:45pm - Lenten Meal</div> <div>7pm - Lenten Service</div>	<div>26</div>	<div>27</div> <div>1pm - GPWaT (God's</div>	<div>28</div> <div>9am - LWML Quilting</div>



Sunday Mornings

Service at 9:00 AM
(also online: Facebook Live, YouTube)

Fellowship time:
10:00AM to 10:30AM
Sunday School/Bible Study
10:30AM to 11:30AM

Church Office Hours

Open: 8:30am
Closed for Lunch: 12:00 - 1:00p.m.
Closed: 5:00 p.m.



Bethany Lutheran Church and School
1000 W 26th St. South
Wichita, KS 67217



Like us on Facebook!
Bethany Lutheran
Church & Early
Childhood Center

